

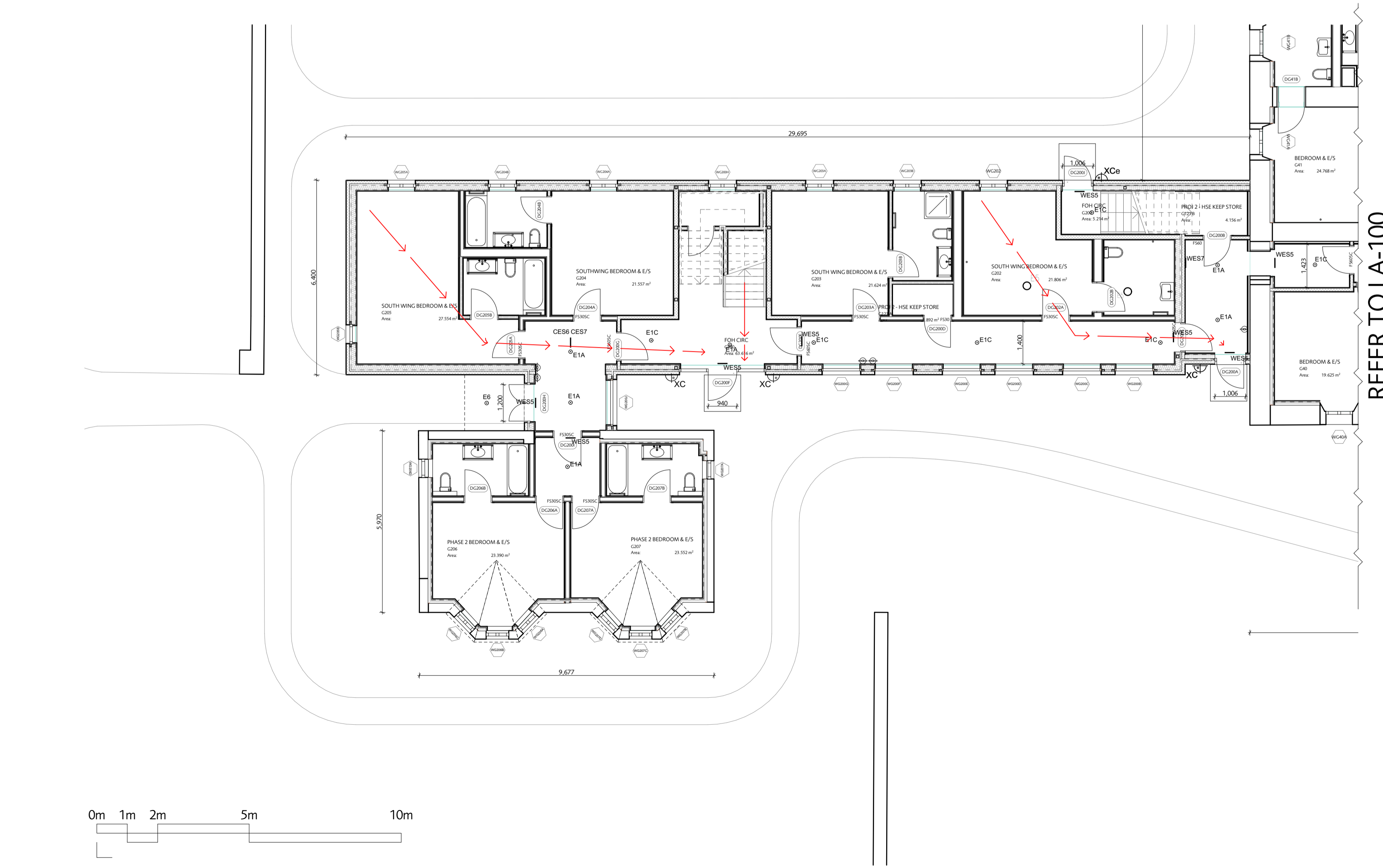
KEY

- 1. MEANS OF ESCAPE**
- FS30 - 30 MINUTE FIRE DOOR WITH SMOKE SEAL
 - FS30SC - 30 MINUTE SELF CLOSING FIRE DOOR WITH SMOKE SEAL
 - FS60 - 60 MINUTE FIRE DOOR WITH SMOKE SEAL
 - FS60SC - 60 MINUTE SELF CLOSING FIRE DOOR WITH SMOKE SEAL
 - M - DENOTES DOOR IS ON A MAGNETIC HOLD-OPEN WHICH RELEASES UPON THE FIRE ALARM
 - PRIMARY ROUTE OF ESCAPE

- 2. FIRE ALARM**
- REFER TO G4S INSTALLATION LAYOUT

- 3. EMERGENCY LIGHTING**
- E1A - Zumtobel Resclite C Antipanic
 - E1C - Zumtobel Resclite C Escape
 - E6 - ACDC Arena
 - E8 - Zumtobel Resclite C Antipanic
 - XJe - Tekna Nautic Ilford Wall C
 - XCe - Bega LED Wall Light
 - E1 - Eaton Micropoint 2 Open Area
 - E2 - Eaton Micropoint 2 Escape Route
 - E3 - Eaton Micropoint 2 High Output
 - E5 - Zumtobel Onlite Resclite C Antipanic
 - E6 - Zumtobel Onlite Resclite C Antipanic IP65
 - hkxBE - Concord Sterling Bulkhead
 - hkFE - Sylvania Sylproof Superia LED
 - hkKE - Thorn Loire
 - hkxAE - Bega LED Wall Light

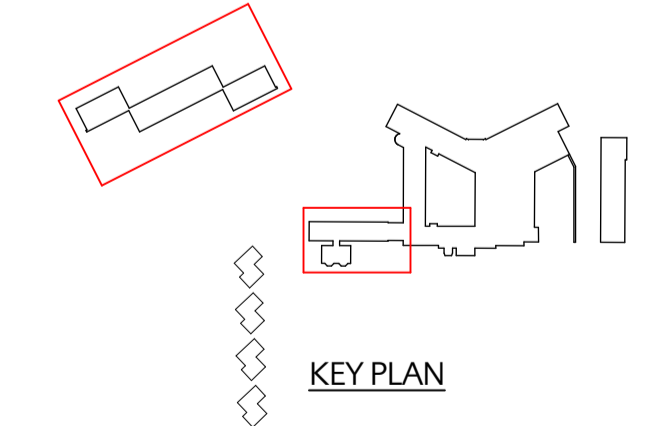
- 4. FIRE FIGHTING EQUIPMENT**
- Portable fire extinguisher, final layout and type tbc
 - FAP - Fire alarm panel
 - Ansul fire suppression
 - Fire fighting water storage tank, refer to site plan for positions



REFER TO LA-100

- 5. SIGNS AND NOTICES**
- CES1, - Zumtobel Onlite Artsign ED Ceiling Recessed
 - CES2, - Zumtobel Onlite Artsign ED Ceiling Recessed
 - CES5, - Zumtobel Onlite Artsign ED Ceiling Recessed
 - CES6, - Zumtobel Onlite Artsign ED Ceiling Recessed
 - CES7, - Zumtobel Onlite Artsign ED Ceiling Recessed
 - CES8, - Zumtobel Onlite Artsign ED Ceiling Recessed
 - WES1, - Zumtobel Onlite Artsign ED Wall Recessed
 - WES4, - Zumtobel Onlite Artsign ED Wall Recessed
 - WES5, - Zumtobel Onlite Artsign ED Wall Recessed
 - WES6, - Zumtobel Onlite Artsign ED Wall Recessed
 - WES7, - Zumtobel Onlite Artsign ED Wall Recessed
 - WES8, - Zumtobel Onlite Artsign ED Wall Recessed
 - EXIT 1 - Zumtobel Onlite Artsign ED Wall Recessed
 - EXIT 2 - Eaton Exit SE LED
 - EE - iGuzzini motus

- LICENSING**
- Area to be licensed for sale of alcohol for consumption on the premises



FOR LICENSING APP.		HUDSON Architects	
status: - xx/02/2018 Issued for licensing application revisions:		NORWICH 27 St Andrews Street Norwich NR2 4TP Tel: 01603 766220 info@hudsonarchitects.co.uk www.hudsonarchitects.co.uk 27 St Andrews Street London EC1M 6EU www.hudsonarchitects.co.uk info@hudsonarchitects.co.uk	
DRAFT		job: MACHRIE HOTEL & GOLF LINKS address: PORT ELLEN ISLAY site: G FLOOR PROJECT 2 AND LODGES scale: 1:100@A1 date: 20/02/2018	
		job reference: ISL LA-101 - drawing number: revision: <small>Do not scale off dimensions. Check all dimensions on site and report any apparent discrepancy immediately to Architect. This drawing is copyright.</small>	